



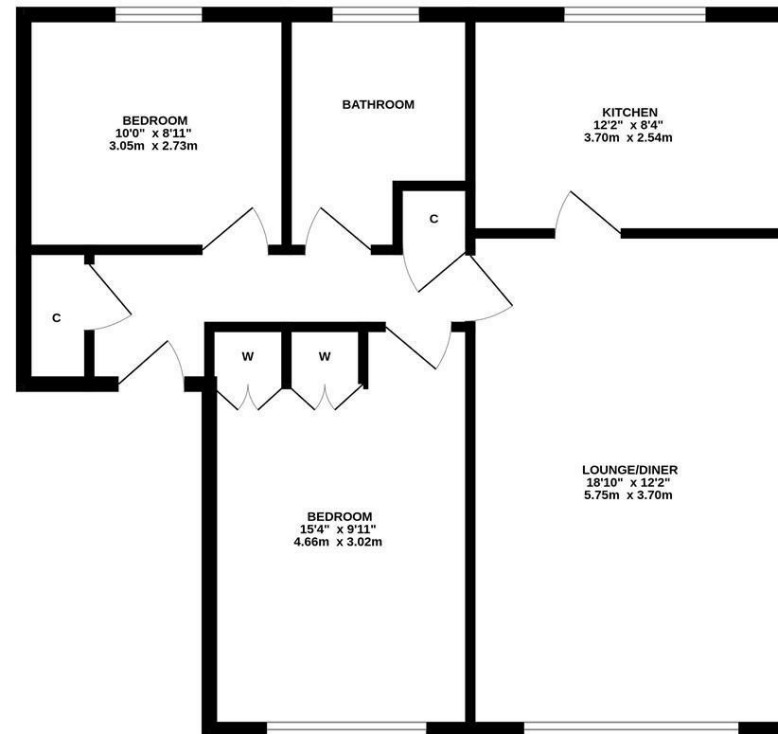
WELL PRESENTED TWO BEDROOM APARTMENT with PRIVATE GARAGE and NO ONWARD CHAIN! Ideally located at Wyncote Court, Jesmond Park East. Wyncote Court, Situated to the East of Melbury Road, is located close to one of Newcastle's most prestigious addresses. Jesmond Park East is a leafy suburb and is well positioned providing easy access into the cosmopolitan shopping facilities of Jesmond as well as its cafés, restaurants and excellent schooling.



The accommodation briefly comprises: communal entrance hall with secure entry system and stairs to all floors; private entrance hall with two storage cupboards; lounge diner with west facing window and green outlook; kitchen with fitted units and work surfaces; bathroom with three piece suite; two bedrooms, bedroom one measuring 15ft with two fitted wardrobe storage cupboards. Externally, a private garage providing off-street parking/storage. A great purchase for a range of potential buyers, early viewings are advised!

Second Floor Apartment | Well Presented Throughout | 699 Sq ft (64.9m²) | Two Bedrooms | Lounge Diner with West Facing Window | Kitchen | Bathroom | Garage | Great Location | Leasehold - 939 Years Remaining | Service Charge £1,932 | Ground Rent £25 Per Annum | Council Tax Band C | EPC: Rating E

TOP FLOOR
699 sq.ft. (64.9 sq.m.) approx.



TOTAL FLOOR AREA: 699 sq.ft. (64.9 sq.m.) approx.

Whilst every attempt has been made to ensure the accuracy of the floorplan contained here, measurements of doors, windows, rooms and any other items are approximate and no responsibility is taken for any error, omission or mis-statement. This plan is for illustrative purposes only and should be used as such by any prospective purchaser. The services, systems and appliances shown have not been tested and no guarantee as to their operability or efficiency can be given.
Made with MetoPix C2020



Offers Over £180,000

IMPORTANT NOTE: These particulars and the descriptions and measurements herein do not constitute representation and whilst every effort has been made to ensure accuracy, this cannot be guaranteed.

